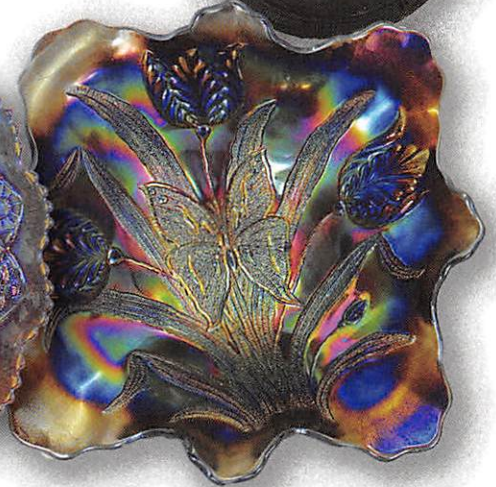


So. California
Carnival Glass Club Convention
Saturday, March 9
9:30 a.m.

SC 69



SC 35



SC 78



SC 9



SC 277



SC 274

Carnival Glass 2019 Auctions

T 6 and 280

Texas Carnival
Glass Club Convention
Saturday, March 23
9:30 a.m.

Open to the Public

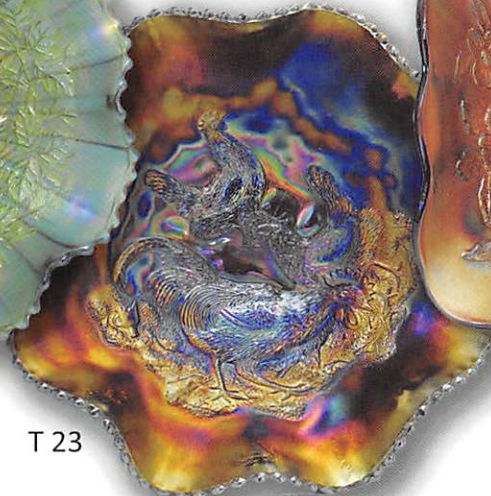
T 112



T 82



T 10



T 23

Seeck Auctions
Jim & Jan Seeck
641-424-1116



Southern California Carnival Glass Club Convention

Texas Carnival Glass Club Convention

Saturday, March 9, 2019 — 9:30 A.M.

Saturday, March 23, 2019 — 9:30 A.M.

Azure Hotel & Suites, 1945 E. Holt Blvd.

Wyndham Dallas Suites- Park Central

Ontario, California 91764

7800 Alpha Road, Dallas, Texas 75240

Bill and Jane Kenney Collection

Delbert Johnston Collection



Open to the Public

Previews: Friday Evenings

ABSENTEE & LIVE BIDDING is available on-line through Auction Flex at: www.seeckauction.com

NO BUYER'S PREMIUM -- EMAIL: jimjan@seeckauction.com

Lodging

March 9 Auction: If staying at the Hotel, call direct (Press 0) for room reservations: 909-390-7778. Cutoff date for rate is Feb 22nd, 2019. San Diego / Southern Calif. Convention info: Contact Jeff Adams at 661-718-3831 or jeffnadine@msn.com **Club Website:** www.socalcarnivalglassclub.com

March 23 Auction: If staying at the Hotel, Call the hotel directly at 972-233-7600 (option 2) to make your reservation. Let them know you are with the Texas Carnival Glass Club March 2019. Group code is: 03206822TC Hotel deadline is Wed. March 6th. Texas Club Convention info: Contact President Emmett Morgan at: 979-836-7896 **Club Website:** www.texascarnivalglass.org

Terms: Cash or Check, VISA, MasterCard and Discover accepted w/proper ID. **4% Clerking Fee** on all purchases made using credit cards. Announcements made day of sale take precedence over any printed information.

** Sales Tax will be charged, please bring your tax-exempt numbers.

ABSENTEE BIDDING OPTIONS

- 1) Call us by phone at: (641) 424-1116
 - 2) Prebid: Enter your bids from our website into our online catalog through the Auction Flex system.
 - An exciting advantage of entering your bids online yourself, is the option to be notified by email if you are outbid on an item. You will know when you are outbid on an item and you can increase your bid on that item or bid on something else.
 - 3) Live Phone Bidding: Is available on pieces with an estimated sale price of \$500 or more.

If you would like to participate in live phone bidding, contact us by the Thursday before the auction.
 - 4) Real-time Bidding: Bid live during the auction through Auction Flex live webcast bidding.
- There is a \$7 handling charge for each successful bid. Shipping and insurance charges are additional.

Bidders will be notified by phone/email if their bid(s) are successful. This will be done 1 - 3 days after the auction.

BID INCREMENTS:

\$1 - \$100/\$5	\$100 - \$200/\$10	\$200 - \$700/\$25	\$700 - \$1,500/\$50
\$1,500 - \$3,000/\$100	\$3,000 - \$5,000/\$250	\$5000+ Auctioneer's Discretion	

◆◆◆ Saturday, March 23 ◆◆◆

- ___ 1. Grape & Cable 6" plate - purple
- ___ 2. Four Flowers 6" plate - peach opal
- ___ 3. Leaf & Beads rose bowl - aqua opal - pastel & pretty
- ___ 4. M'burg Blackberry Wreath 3 in 1 edge sauce - green - radium
- ___ 5. Blackberry Open Edge ruffled basket - aqua
- ___ 6. Tree Trunk 12 1/2" midsize vase - ice blue - super example
- ___ 7. M'burg Little Stars 7" ruffled bowl - amethyst - satin
- ___ 8. Fashion 7 pc water set - marigold
- ___ 9. Stippled Three Fruits ruffled bowl w/ribbed back - ice blue - very rare bowl
- ___ 10. Stippled Three Fruits ruffled bowl w/ribbed back - sapphire - super pretty for this rare bowl
- ___ 11. Stippled Three Fruits ruffled bowl w/ribbed back - aqua opal - very nice
- ___ 12. M'burg Blackberry Wreath 7" 3 in 1 edge bowl - amethyst - radium
- ___ 13. Dragon & Lotus 3 in 1 edge bowl - peach opal - outstanding!
- ___ 14. Dragon & Lotus 3 in 1 edge bowl - green - beautiful
- ___ 15. Beaded Cable rose bowl - ice green - very scarce color, one foot has been slightly buffed
- ___ 16. Beaded Cable rose bowl - ice blue - nice
- ___ 17. Beaded Cable rose bowl - white
- ___ 18. Beaded Cable rose bowl - aqua opal - nice
- ___ 19. Beaded Cable rose bowl - green - pretty
- ___ 20. Beaded Cable rose bowl - blue - nice
- ___ 21. Beaded Cable rose bowl - purple - one small flake on side of foot
- ___ 22. Beaded Cable rose bowl - marigold
- ___ 23. Farmyard 8 ruffled bowl - purple - nice example, highly desirable, very tiny pinpoint on one point
- ___ 24. Rustic 6 1/2" squatty vase - white
- ___ 25. Rose Show ruffled bowl - green - scarce color
- ___ 26. Rose Show ruffled bowl - ice blue - pretty - chip on flat of base
- ___ 27. Rose Show ruffled bowl - aqua opal - nice
- ___ 28. Rose Show ruffled bowl - marigold - nice, small chip on base at seam
- ___ 29. Ten Mums ruffled bowl - green
- ___ 30. Ten Mums ruffled bowl - blue
- ___ 31. Broken Arches 11 pc. punch set - purple - very pretty set, inside of bowl is wonderful
- ___ 32. Nautilus whimsy creamer - peach opal
- ___ 33. Hearts & Flowers ruffled bowl w/ribbed back - aqua - small chip on point
- ___ 34. Hearts & Flowers ruffled bowl w/ribbed back - ice green
- ___ 35. Octagon 4 1/2" deep berry bowls (2) - purple - light lavender color, super cute little bowls & gorgeous
- ___ 36. M'burg Primrose ruffled bowl - green - satin, nice
- ___ 37. M'burg Primrose ruffled bowl - marigold - radium, nice
- ___ 38. Grape & Cable small size ruffled fruit bowl - ice green - pretty example, scarce
- ___ 39. Grape & Cable small size ruffled fruit bowl - blue - scarce color, very nice
- ___ 40. Leaf Swirl ruffled compote - amber
- ___ 41. Leaf Swirl ruffled compote - teal
- ___ 42. Concord 3 in 1 edge bowl - green - super pretty
- ___ 43. Hearts & Flowers PCE bowl w/ribbed back - blue - very pretty example, quite hard to find
- ___ 44. Hearts & Flowers PCE bowl w/ribbed back - marigold - very nice
- ___ 45. Fenton's Peacock at Urn 3 in 1 edge bowl - green
- ___ 46. Lattice & Grape tankard water pitcher w/1 tumbler - marigold
- ___ 47. Open Rose 9" plate - amber - pretty
- ___ 48. Open Rose 9" plate - green
- ___ 49. Open Rose 9" plate - marigold
- ___ 50. Butterfly bonbon w/threaded back - purple - nice
- ___ 51. M'burg Whirling Leaves ruffled bowl - vaseline - very rare color, radium & nice
- ___ 52. Soutache dome fld crimped edge plate - peach opal - does turn up just a bit
- ___ 53. Horse Medallion rose bowl - blue
- ___ 54. Hearts & Flowers ruffled compote - ice green - pretty
- ___ 55. Hearts & Flowers ruffled compote - ice blue - light color
- ___ 56. Hearts & Flowers ruffled compote - aqua opal - butterscotch, nice
- ___ 57. Hearts & Flowers ruffled compote - white - nice
- ___ 58. Holly 9" plate - green - very flat
- ___ 59. Holly 9" plate - amethyst - pretty irid.

- ___ 60. Holly 9" plate - blue - pretty
- ___ 61. Holly 9" plate - marigold
- ___ 62. Holly 9" plate - white - pretty irid.
- ___ 63. Open Rose 8" ruffled bowl - purple - pretty
- ___ 64. Open Rose 8" ruffled bowl - amber - pretty
- ___ 65. M'burg Blackberry Wreath crimped edge sauce - marigold - radium
- ___ 66. N's Stippled Peacock at Urn master IC bowl - blue - a beauty
- ___ 67. M'burg Grape Wreath Variant 8" 3 in edge bowl - marigold - radium, pretty
- ___ 68. Stippled Grape & Cable Variant ruffled bowl w/ribbed back - sapphire - very nice
- ___ 69. Daisy & Plume ftd rose bowl w/Raspberry interior - purple - chip on side of foot that is iridized over, tiny nick on one toe
- ___ 70. Daisy & Plume ftd rose bowl w/Raspberry interior - marigold - dark, nice
- ___ 71. Dandelion mug - aqua opal - butterscotch, nice
- ___ 72. Fenton's Peacock at Urn 9" plate - blue
- ___ 73. Fenton's Peacock at Urn 9" plate - marigold - dark, nice
- ___ 74. Fenton's Peacock at Urn 9" plate - white
- ___ 75. M'burg Grape Wreath 7" ruffled bowl - green - radium, pretty
- ___ 76. N's Peacock at the Fountain 7 pc. water set - blue - nice
- ___ 77. Leaf & Beads rose bowl - aqua opal - butterscotch
- ___ 78. Leaf & Beads rose bowl - green - nice
- ___ 79. Leaf & Beads rose bowl - blue
- ___ 80. Leaf & Beads rose bowl - purple
- ___ 81. Leaf & Beads rose bowl - marigold - Sunflower interior
- ___ 82. M'burg Peacock at Urn giant compote - amethyst - satin & super nice, this is a great example
- ___ 83. Ten Mums 3 in 1 edge ftd bowl - marigold - pretty, rare ftd version
- ___ 84. Fine Cut & Roses rose bowl w/no collar base - ameth. - scarce
- ___ 85. Fine Cut & Roses rose bowl - ice blue - nice
- ___ 86. Fine Cut & Roses rose bowl - green - super pretty example
- ___ 87. Fine Cut & Roses rose bowl - marigold
- ___ 88. Rose Show Variant 9" plate - marigold - very scarce & pretty, very slight polishing on one point
- ___ 89. Persian Garden 6" plate - white - nice
- ___ 90. N's Bushel Basket - aqua opal - butterscotch
- ___ 91. N's Bushel Basket - ice green
- ___ 92. N's Bushel Basket - smokey lavender
- ___ 93. Poppy Show 9" plate - blue - scarce, polished spot between points
- ___ 94. Poppy Show 9" plate - marigold - very dark & pretty
- ___ 95. Basketweave Open Edge 2 sides up basket - red
- ___ 96. Basketweave Open Edge 2 sides up basket - lime green
- ___ 97. Fruits & Flowers bonbon - ice blue - nice
- ___ 98. Fruits & Flowers bonbon - blue - pretty
- ___ 99. Peacock & Grape ruffled bowl - peach opal - super nice example
- ___ 100. Ribbon Tie 3 in 1 edge low bowl - blue
- ___ 101. Drapery rose bowl - aqua opal - pastel, nice
- ___ 102. Grape & Cable 10 pc. master punch set - purple - rare set & desirable, couple of chips on base of bowl
- ___ 103. Grape & Cable 11 pc. master punch set - marigold - pretty, scarce
- ___ 104. Persian Medallion bonbon - red - nice
- ___ 105. Persian Medallion bonbon - lime green
- ___ 106. Wishbone ftd ruffled bowl - ice blue - scarce, nice
- ___ 107. Wishbone ftd ruffled deep bowl - purple
- ___ 108. Wishbone ftd ruffled bowl - marigold - nice
- ___ 109. Grape & Cable banana boat - green - scarce
- ___ 110. Orange Tree IC shaped bowl - blue
- ___ 111. Orange Tree w/trunk IC shaped bowl - marigold
- ___ 112. M'burg Trout & Fly square shaped bowl - amethyst - satin, very rare bowl & nice
- ___ 113. M'burg Hanging Cherries 7" IC shaped bowl - green - satin
- ___ 114. Lotus & Grape 9" plate - marigold - scarce color for these, highly desirable
- ___ 115. Orange Tree standard size mug - red
- ___ 116. Orange Tree standard size mug - vaseline - pretty dark marigold overlay
- ___ 117. Orange Tree standard size mug - lime green
- ___ 118. Orange Tree standard size mugs - blue & marigold AND Orange Tree wine - marigold
- ___ 119. Stippled Grape & Cable Variant 9" plate w/ribbed back - blue - scarce item
- ___ 120. Luster Rose 5 pc. water set - clambroth
- ___ 121. Peacock at the Fountain ruffled ftd fruit bowl - blue - nice, always in demand
- ___ 122. Basketweave Open Edge ruffled basket - red
- ___ 123. Basketweave Open Edge ruffled basket - aqua
- ___ 124. Good Luck ruffled bowl w/ribbed back - green - nice
- ___ 125. Good Luck ruffled bowl w/ribbed back - purple
- ___ 126. M'burg Fleur de Lis tri-cornered crimped edge dome ftd bowl - marigold - radium, scarce, couple chips on saw tooth base
- ___ 127. M'burg Fleur de Lis 3 in 1 edge dome ftd bowl - amethyst - radium
- ___ 128. Windflower ruffled bowl - marigold
- ___ 129. Round Up 9" plate - blue - very nice
- ___ 130. Prayer Rug bonbon - marigold on custard - great example for these
- ___ 131. Carnival Hobstar spooner - amethyst
- ___ 132. M'burg Seaweed 3 in 1 edge 10" bowl - marigold - satin, nice
- ___ 133. Three Fruits 9" plate w/plain back - purple - super
- ___ 134. Loganberry vase - amber - scarce
- ___ 135. Persian Medallion hair receiver - marigold
- ___ 136. Pony 10 ruffled bowl - ice green - rare color, nice bowl
- ___ 137. Grapevine Lattice 7" plate - purple
- ___ 138. Daisy & Drape flared vase - blue - tiny nick on top of one foot
- ___ 139. Daisy & Drape flared out vase - aqua opal - nice
- ___ 140. Strawberry bonbon - vaseline
- ___ 141. Greek Key PCE bowl w/BW back - green - nice
- ___ 142. Round Up IC shaped bowl - peach opal
- ___ 143. Round Up IC shaped bowl - white - nice irid.
- ___ 144. Holly ruffled bowl - red - very pretty example, cherry red color
- ___ 145. Horse Medallion JIP ftd bowl - marigold
- ___ 146. Stag & Holly lg size ftd ruffled bowl - blue - nice
- ___ 147. Poppy Show ruffled bowl - ice blue - scarce, nice
- ___ 148. Poppy Show ruffled bowl - blue - has electric highlights, scarce color
- ___ 149. Poppy Show ruffled bowl - purple - scarce
- ___ 150. Enameled Single Flower 9" ruffled bowl - peach opal
- ___ 151. Enameled Cherries & Little Flowers 7 pc. water set - blue
- ___ 152. Orange Tree 9" plate - marigold
- ___ 153. Orange Tree w/trunk 9" plate - white
- ___ 154. Stippled Peacocks 9" plate w/ribbed back - blue - scarce
- ___ 155. Persian Garden lg size IC shaped bowl - purple - very scarce bowl, highly desirable
- ___ 156. Pond Lily bonbon - marigold
- ___ 157. Peacock at the Fountain spooner - marigold
- ___ 158. Vintage 7" plate - green
- ___ 159. Ski Star lg size ruffled bowl - peach opal
- ___ 160. Scroll Embossed 9" plate - purple - nice
- ___ 161. Stippled Three Fruits 9" plate w/ribbed back - marigold - nice
- ___ 162. Peacocks ruffled bowl w/ribbed back - aqua opal - pastel & beautiful
- ___ 163. Peacocks ruffled bowl w/ribbed back - purple - nice
- ___ 164. Grapevine Lattice 7" ruffled bowl - white
- ___ 165. Coin Spot ruffled compote - celeste blue - very scarce, nice
- ___ 166. Orange Tree loving cup - marigold - nice
- ___ 167. M'burg Nesting Swan ruffled bowl - green - satin, tiny pinpoint on top edge of ruffle
- ___ 168. Leaf Chain 9" plate - marigold - pretty
- ___ 169. Leaf Chain 9" plate - white
- ___ 170. Two Flowers spt ftd rose bowl - marigold - one cleat has chip

- ___ 171. Strawberry 9" plate w/BW back - purple
 ___ 172. Strawberry 9" plate w/BW back - marigold
 ___ **173. Raspberry milk pitcher - green - nice**
 ___ 174. Carolina Dogwood ruffled bowl - marigold on moonstone
 ___ **175. Wreath of Roses 11 pc. punch set – blue - has plain interior, 7 cups have Vintage interior, 2 cups have Persian Medallion interior**
 ___ 176. N's Eight Sided Bushel Basket - white
 ___ 177. N's Eight Sided Bushel Basket - marigold - nice
 ___ **178. M'burg Vintage 10" IC shaped bowl w/Hobnail back - green - satin & pretty, has heat check in collar base**
 ___ 179. M'burg Blackberry Wreath deep round sauce - marigold - radium, nice
 ___ **180. Fern Brand Chocolates 2 sides up advertising plate - amethyst - nice example**
 ___ 181. Beaded Cable rose bowl w/Rayed interior - green
 ___ 182. Beaded Cable rose bowl w/Rayed interior - purple
 ___ **183. Cosmos & Cane 7" ruffled bowl - marigold - neat piece**
 ___ **184. Cosmos & Cane 7" ruffled bowl w/Headdress interior - honey amber - nice**
 ___ **185. Cosmos & Cane 7" ruffled bowl w/Headdress interior - white - nice**
 ___ 186. Good Luck PCE bowl w/ribbed back - blue - electric highlights
 ___ 187. Good Luck PCE bowl w/ribbed back - purple
 ___ 188. Good Luck PCE bowl w/ribbed back - marigold
 ___ 189. Grape & Cable 9" plate w/plain back - purple
 ___ 190. Grape & Cable 9" plate w/BW back - marigold
 ___ 191. M'burg Hanging Cherries 10" IC shaped bowl - green - satin
 ___ 192. Pair of Ripple 10" & 7 1/2" vases - amber - 2 3/4" bases
 ___ 193. Lot of 3 Ripple 10 1/2", 9 1/2" & 6" vases - marigold - 2 3/4" bases
 ___ **194. Stippled Strawberry 9" plate w/ribbed back - purple**
 ___ 195. Heavy Grape 8" plate - marigold - nice
 ___ 196. Fenton's Peacock at Urn ruffled bowl - amethyst - scarce color
 ___ **197. Dandelion tankard water pitcher & 1 tumbler - marigold - nice, dark from top to bottom**
 ___ 198. Puzzle bonbon - white
 ___ 199. Three Fruits Medallion spt ftd ruffled bowl - purple
 ___ **200. Dragon & Lotus ruffled bowl - peach opal - scarce, nice**
 ___ 201. Lotus & Grape card tray shaped bonbon - blue
 ___ 202. Nippon PCE bowl w/ribbed back - ice blue
 ___ 203. Beaded Bullseye 11 1/2" vase - marigold
 ___ **204. Tornado lg size vase - green - scarce, nice**
 ___ 205. M'burg Blackberry Wreath 7" IC shaped bowl - marigold - satin
 ___ 206. M'burg Leaf & Little Flowers goblet shaped compote - green - satin, scarce
 ___ 207. M'burg Leaf & Little Flowers goblet shaped compote - marigold - radium, nice
 ___ **208. Peacocks 9" plate w/ribbed back - purple - nice**
 ___ 209. Peacocks 9" plate w/ribbed back - marigold - nice
 ___ **210. Peacocks 9" plate w/ribbed back - lime green - hard to find color**
 ___ 211. Grape Delight nut bowl - lavender
 ___ 212. Grape Delight nut bowl - marigold
 ___ 213. M'burg Peacock at Urn Mystery 3 in 1 edge bowl - amethyst - radium, couple of irid. spots in center
 ___ 214. Grape & Cable ftd ruffled fruit bowl w/Persian Medallion interior - marigold - nice
 ___ 215. Fenton's Peacock at Urn ruffled bowl - blue - nice
 ___ 216. Leaf & Beads rose bowl - aqua opal
 ___ **217. Wishbone & Spades 10" ruffled bowl - peach opal - scarce, nice**
 ___ 218. Coin Dot lg size rose bowl - green
 ___ 219. Orange Tree shaving mug - marigold
 ___ 220. Fenton's Fine Rib 8 1/2" vase - red
 ___ **221. Dragon & Strawberry ftd ruffled bowl - marigold - scarce pattern & very nice!**
 ___ 222. Dragon & Lotus IC shaped bowl - powder blue - scarce color
 ___ 223. Plaid ruffled bowl - marigold
 ___ 224. Grape & Cable PCE bowl w/BW back - green
 ___ 225. Acanthus chop plate - marigold
 ___ **226. M'burg Peacock 10" ruffled bowl – amethyst - radium, nice**
 ___ 227. Four Seventy Four water pitcher - marigold
 ___ 228. Pinecone saucer shaped 6" plate – green
 ___ 229. Drapery 8" vase - sapphire - rare, nice
 ___ 230. Captive Rose 9" plate - blue - small pinpoint on back of one point
 ___ 231. Grape & Cable hatpin holder - marigold
 ___ 232. Strawberry ruffled bowl w/plain back - purple
 ___ 233. Fanciful ruffled bowl - white
 ___ **234. M'burg Many Stars ruffled bowl - amethyst - 6 point star, scarce**
 ___ 235. Curled Rib 8" JIP vase - marigold
 ___ **236. Peacock at the Fountain 8 pc. punch set– marigold- nice set**
 ___ 237. Fenton's Three Fruits 12 sided plate - blue
 ___ **238. N's Peacock at Urn master IC bowl - ice green - always in demand**
 ___ **239. N's Peacock at Urn master IC bowl - ice blue - pretty**
 ___ 240. N's Stippled Peacock at Urn master IC bowl - custard - not Carnival Glass
 ___ 241. Three Fruits ruffled bowl w/plain back - green - pretty
 ___ 242. Kittens cup & saucer - marigold
 ___ 243. Grape & Cable 6" handgrip plate - purple
 ___ **244. Fenton's Peacock at Urn IC shaped bowl - marigold on moonstone - very rare & a nice example**
 ___ 245. Tree Trunk 7" squatty vase - green
 ___ 246. M'burg Blackberry Wreath 10" ruffled bowl - marigold - satin
 ___ 247. M'burg Holly Sprig 8" crimped edge ruffled bowl - amethyst - radium
 ___ **248. Hearts & Flowers 9" plate - marigold - super nice**
 ___ 249. Louisa rose bowl - light green
 ___ 250. Daisy & Drape turned in vase - marigold
 ___ 251. Daisy & Drape turned in vase - white
 ___ 252. Heavy Grape chop plate - marigold
 ___ 253. M'burg Holly Sprig tri-cornered 8" bowl - amethyst - radium - scarce shape
 ___ 254. Stag & Holly lg size ftd IC shaped bowl - marigold
 ___ 255. Holly square shaped hat - powder blue
 ___ 256. Peacocks PCE bowl w/ribbed back - marigold
 ___ 257. Rose Spray goblet shaped compote - celeste blue
 ___ 258. Leaf Chain 7" plate - marigold
 ___ **259. Stippled Grape & Cable PCE bowl w/ribbed back - ice blue - super nice example**
 ___ 260. Garland rose bowl - marigold - pretty
 ___ 261. Lattice & Points 7" ruffled bowl - white
 ___ 262. Lattice & Points 7" ruffled bowl - marigold
 ___ 263. M'burg Leaf & Little Flowers ruffled compote - amethyst - radium
 ___ 264. Octagon small size 7 pc. water set - marigold
 ___ **265. M'burg Peacock 3 in 1 edge sauce - green - rare sauce**
 ___ 266. Fantail ftd ruffled bowl - marigold - super pretty
 ___ 267. M'burg Grape Wreath 3 in 1 edge 7" bowl - amethyst - radium
 ___ **268. M'burg Trout & Fly ruffled bowl - green - satin, nice**
 ___ **269. M'burg Trout & Fly ruffled bowl – marigold - satin**
 ___ 270. Double Loop chalice or sugar bowl - blue
 ___ 271. Butterfly bonbon w/plain back - marigold
 ___ 272. M'burg Cosmos IC sauce - green - radium
 ___ 273. Rose Show 9" plate – blue - nice, heat check in collar base, small spot of epoxy on rose
 ___ 274. Horse Medallion ftd ruffled bowl - green
 ___ **275. Persian Medallion 9" plate – marigold - a beautiful one!**
 ___ 276. April Showers 10" vase - green
 ___ 277. M'burg Blackberry Wreath ruffled sauce – marigold - radium
 ___ **278. Stippled Strawberry ruffled bowl w/ribbed back - lime green - rare color & very pretty**
 ___ 279. M'burg Hobstar & Feather punch cup - green - tough to find if you need one
 ___ **280. Tree Trunk 12 1/2" midsize vase - ice blue - another beauty**

PRESORTED
FIRST CLASS MAIL
US POSTAGE
PAID
COPI

SEEK AUCTIONS
P.O. BOX 377
MASON CITY, IA 50401

T 51



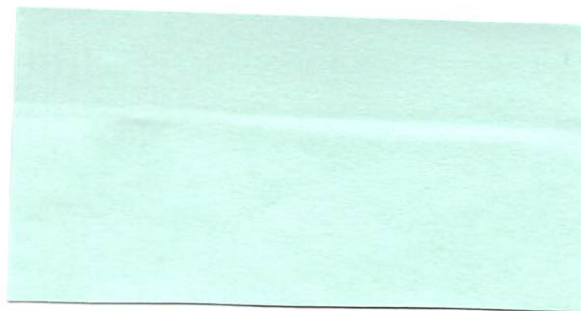
**2019 CARNIVAL
GLASS AUCTION**

ONTARIO, CAL.

MARCH 9

DALLAS, TEXAS

MARCH 23



- ___ 281. Horse Medallion ftd nut bowl – blue - lacks irid. in center
- ___ 282. M'burg Primrose ruffled bowl - green - satin
- ___ 283. M'burg Primrose ruffled bowl - marigold - radium
- ___ 284. Fenton's Peacock at Urn 9" plate - marigold
- ___ 285. N's Beaded Cable rose bowl - aqua opal - pastel
- ___ 286. N's Beaded Cable rose bowl - aqua opal - butterscotch
- ___ 287. N's Beaded Cable rose bowl - custard - not Carnival Glass
- ___ 288. Stippled Three Fruits 9" plate w/ribbed back - marigold
- ___ 289. Fine Cut & Roses rose bowl – amethyst - has no collar base
- ___ 290. Fine Cut & Roses rose bowl – marigold
- ___ 291. Open Rose 9" plate - amber
- ___ 292. Leaf & Beads rose bowl - aqua opal
- ___ 293. Hearts & Flowers ruffled compote - white
- ___ 294. Four Flowers 6" plate - peach opal
- ___ 295. N's Bushel Basket - aqua opal - butterscotch, nice
- ___ 296. Persian Medallion bonbon - lime green
- ___ 297. Vintage 7" plate - green
- ___ 298. Drapery rose bowl - aqua opal - butterscotch, nice
- ___ 299. Three Fruits 9" plate w/BW back - marigold
- ___ 300. Basketweave Open Edge 2 sides up basket - lime green
- ___ 301. Dandelion mug - aqua opal - butterscotch, nice
- ___ 302. Pair of Dandelion tumblers - ice blue
- ___ 303. Singing Birds and Raspberry tumblers - marigold
- ___ 304. Lot of 3 tumblers - one contemporary
- ___ 305. Lot of 3 Wreath of Roses punch cups - marigold, amethyst & green
- ___ 306. Lot of 4 pieces - marigold
- ___ 307. Lot of 3 pieces - marigold
- ___ 308. Lot of 5 vases - marigold
- ___ 309. Lot of 2 Northwood pieces
- ___ 310. Lot of 5 Fenton pieces
- ___ 311. Lot of 7 Imp. pieces - marigold
- ___ 312. Lot of 3 pieces
- ___ 313. Lot of 3 pieces
- ___ 314. Orange Tree Loving cups - blue & amethyst - damaged
- ___ 315. Inverted Strawberry powder jar - marigold - both base & lid have nicks
- ___ 316. Pair of Grape & Cable items - green - damaged
- ___ 317. M'burg Primrose ruffled bowl – amethyst - tiny pinpoint on top of point
- ___ 318. M'burg Whirling Leaves ruffled bowl - amethyst - radium, pretty, chip on backside of top edge
- ___ 319. Hearts & Flowers ruffled bowl w/ribbed back - aqua - flake between points
- ___ 320. Cosmos & Cane 10" ruffled bowl - white - heat check in base
- ___ 321. Pair of plates - marigold - both have chips
- ___ 322. Zippered Heart 5 pc. berry set - purple - master has one ruffle repaired
- ___ 323. Embroidered Mums ruffled bowl w/ribbed back - blue - tiny pinpoint on one point
- ___ 324. Imperial Grape wine bottle - marigold - stopper has crack in bottom
- ___ 325. Drapery 7" vase - ice green - chip on foot
- ___ 326. Lot of 3 Fenton pieces - all have damage
- ___ 327. Lot of 3 M'burg pieces - all have damage
- ___ 328. Fashion punch set - marigold - chip on bowl points
- ___ 329. Lot of 4 rose bowls - all have minor damage
- ___ 330. Lot of 9 Imperial pieces - all have damage
- ___ 331. Lot of 3 marigold pieces - all have damage
- ___ 332. Lot of 4 Dugan pieces - all have damage
- ___ 333. Lot of 7 pieces - all have damage
- ___ 334. Pair of Custard pieces - both have damage - not iridized